



Barrow County Emergency Services

## Barrow County – Community Emergency Medical Assessment

### Emergency Response Zones (ERZ):

Barrow County Emergency Services is the licensed Emergency Medical Service provider for all Barrow County to include all Municipalities.

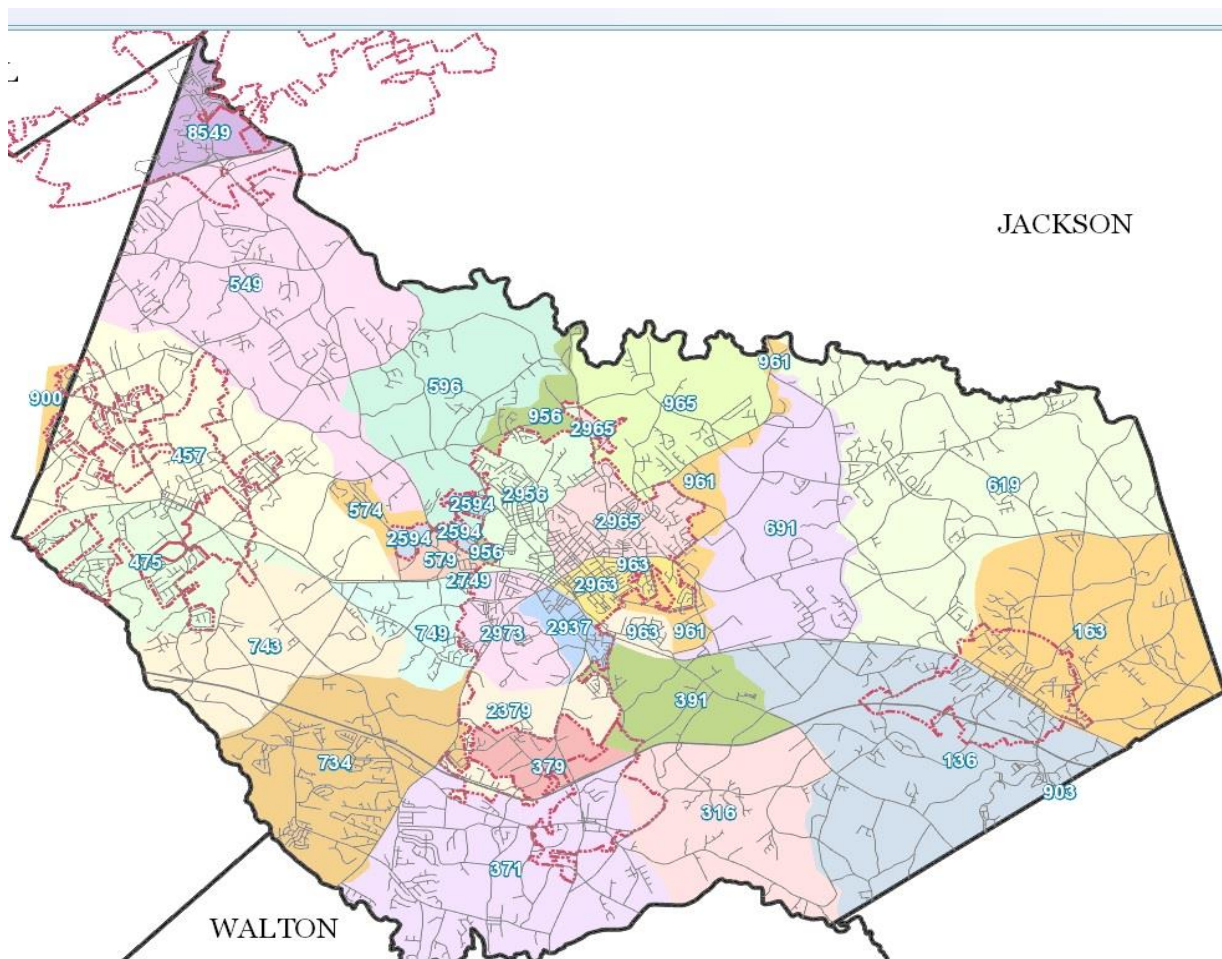
Barrow County Emergency Services License Number: **007-05** - GEMSIS PCR Number: **114**

Emergency Response Zone or Standards of Coverage – Defined as those adopted, written policies and procedures that determines the distribution, concentration and reliability of fixed and mobile response force for Fire/Rescue and Emergency Medical Services.

Emergency Responses Zones were established by utilizing GIS mapping to ensure ideal response for all of Barrow County. (*Adopted August 2015, amended May 2019*)

For the purpose of Barrow County, Barrow County Emergency Services has defined twenty (32) ERZ sub zones in its Standards of Coverage. These sub zones identify the 1<sup>st</sup>, 2<sup>nd</sup>, and 3<sup>rd</sup> due responses for each of the respected zones which is automatically built-in the CAD system to ensure efficient operations.

Emergency Response Zones are as follows:



### **Data Components utilized:**

- ❑ All request for services were utilized in the computation of the following response data. Barrow County considers all calls for service for an ambulance into the dispatch center emergency responses.
- ❑ Tyler/New World Computer Aided Dispatch (CAD) Software (DSS) Decision Support Server.
- ❑ ImageTrend Records Management System (RMS).

### **Response times:**

While the State Office of EMS and Trauma (Department of Public Health) doesn't establish a set standard on response times, it is the understanding that the critically ill and injured benefit most from timely delivery of appropriate care.

NFPA 1710 Standard on response times – Advanced Life support response time of 480 seconds (8 minutes) or less for the arrival of an advanced life support unit at an emergency medical incident where the service is provided by the fire service.

Also referenced in the Emergency Medical Services 4<sup>th</sup> edition (Guide book Fire-Based EMS systems) – “Policies for the Public Good” – *Response time guidelines for victims of cardiac arrest, notes that the highest hospital discharge rates have been achieved in patients in whom CPR was initiated within four minutes of arrest and advanced cardiac life support administered within eight minutes*

The “Golden Hour” describes the precious time period (60 minutes) from time of injury through location and transportation to definitive care of a critically injured trauma patient to minimize death and permanent disability.

Barrow County Emergency Services goal for performance standards is following the NFPA 1710 Recommended Standard regarding response times to emergency incidents within our licensed service area.

Emergency Incidents - means a condition or situation in which an individual perceives a need for immediate medical attention, including conditions or situations requiring medical care, extrication, rescue, or risk suppression in connection with the provision of emergency medical services, or where the potential for such need is perceived by the individual, a bystander, or an emergency medical services provider.

### **Year to Date Response Data (January 1, 2020 – October 31, 2020)**

- **Total Responses: 7,585**
- **Patient Contacts: 7,384**
- **Total Transports: 3,967**
- **AVG Zone Wide Response Time (Dispatch to On Scene) – 7 minutes and 29 seconds**

**Conclusion:**

In conclusion, although the state of Georgia does not define a response time standard through law or rules and regulations; Barrow County Emergency Services strives to meet or exceed all consensus standards set forth by NFPA 1710, American Heart Association, and the Emergency Medical Services Guidebook 4<sup>th</sup> edition. Barrow County Emergency Services has meet these goals for year to date 2020 and strives to continue to improve response times.

By the utilization of strategically located stations, policies and procedures, and performance standards Barrow County Emergency Services continues to offer a high level medical response within its licensed coverage area.

As the communities within the county continue to experience growth, so does the demand for services provided by Barrow County Emergency Services. As a result of potential growth, the Standards of Coverage have undergone extensive analysis over the past year. In June of 2019 Barrow County Board of Commissioners entered into a Public, Private Partnership (PPP) with Northeast Georgia Physicians Group (NGPG) to provide an additional ambulance in the Barrow County Response Zone, in May of 2020 that PPP was expanded to allow for NGPG to staff one existing ambulance located at the BCES Emergency Response facility in Auburn GA, and we are currently in negotiations to further expand the services offered by NGPG to create a sustainable model for Emergency Medical Services moving into the future.

In Dec of 2020 BCES Emergency Communication will begin to utilize an Emergency Medical Dispatch program which will allow for enhanced dispatch procedures along with pre-arrival medical instructions to be given to callers for life threatening emergencies. This program will also allow for request for service to be categorized into different levels of emergency and non-emergency call types and will allow for better response time tracking.